

---

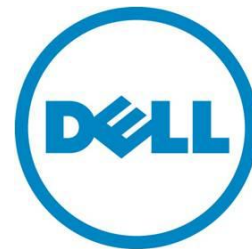
# Restoring iDRAC License after Motherboard replacement

---

*This Dell Technical White Paper outlines the different ways that a customer can restore the iDRAC license after a motherboard replacement.*

Rose Babu

Pramada Singireddy



## Contents

Introduction .....	3
Licensing on 12G Servers .....	3
Restoring License using iDRAC7 .....	3
Restoring License using the BackUp and Restore Feature .....	5
Restoring License using License Installation Tool .....	6
Conclusion or Summary .....	6



## Introduction

The new 12th generation Dell PowerEdge servers offer digital licensing through the onboard iDRAC7 with Lifecycle Controller 2. When a motherboard is replaced, the license needs to be restored on the new motherboard. Dell Systems Management Solution offers multiple methods to restore the license.

This paper provides the details on

1. Installing License using iDRAC Interfaces.
2. Restoring License using the BackUp and Restore Feature
3. Installing a 30 - Day Evaluation License using the Local License Installation Tool.

## Licensing on 12G Servers

The new 12th generation Dell PowerEdge servers offer digital licensing through the onboard iDRAC7 with Lifecycle Controller 2. License is installed on the server in the factory or the customer site with one of the iDRAC Interfaces. iDRAC7 features are available based on the license installed on the server. When the motherboard is replaced, the license needs to be restored/reinstalled on the new motherboard.

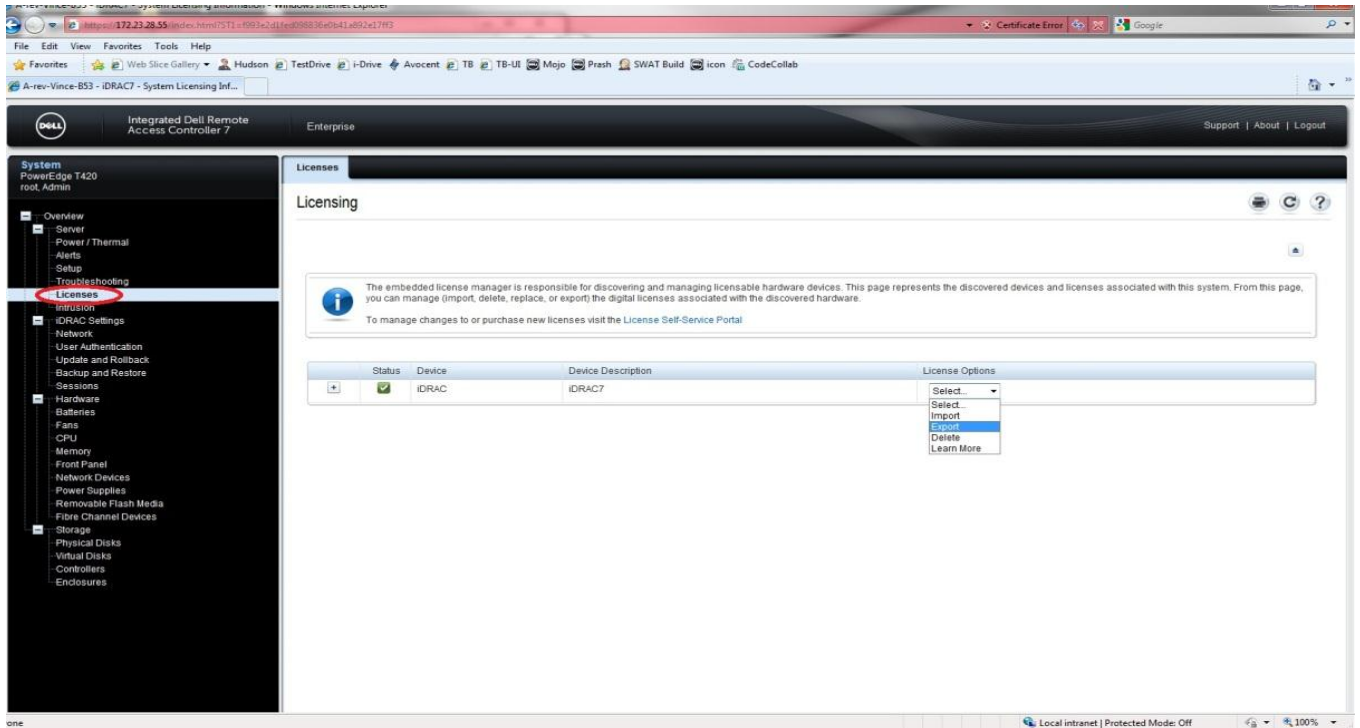
## Restoring License using iDRAC7

### Before Motherboard Replacement:

Before you replace the MB, the license needs to be exported using one of the iDRAC Interfaces.

- iDRAC GUI : Go to the Licenses tab and select Export from the drop-down list under License Options to export all licenses



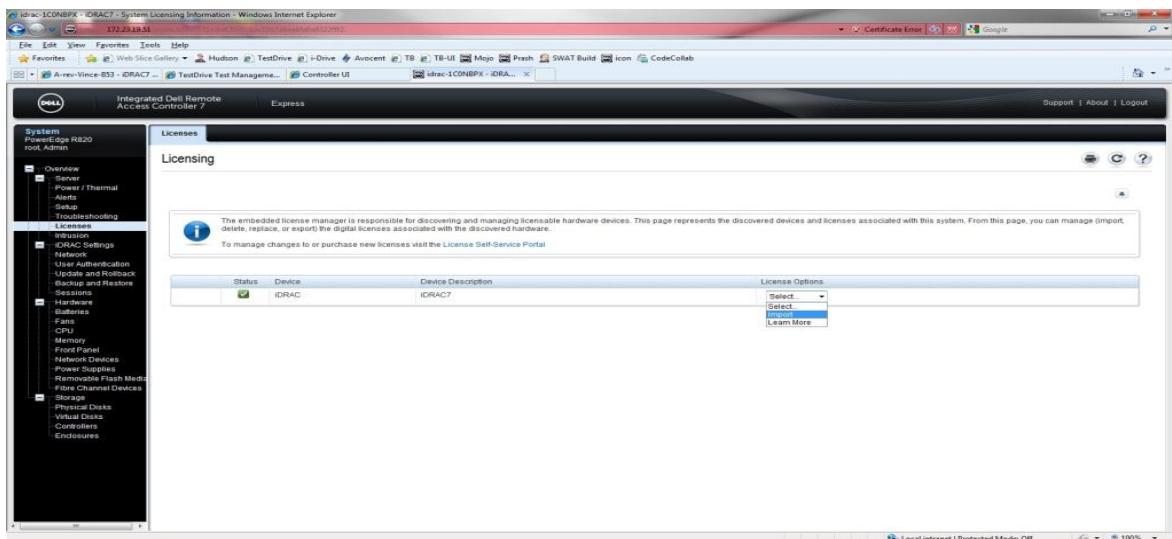


- WSMAN and RACADM Interfaces: More details on License Management can be found in the [Licensing Whitepaper](#)

### After Motherboard Replacement:

After the mother board is replaced, import the license using one of the iDRAC interfaces.

- iDRAC GUI : Go to the Licenses tab and select Import from the drop-down list under License Options to import the license



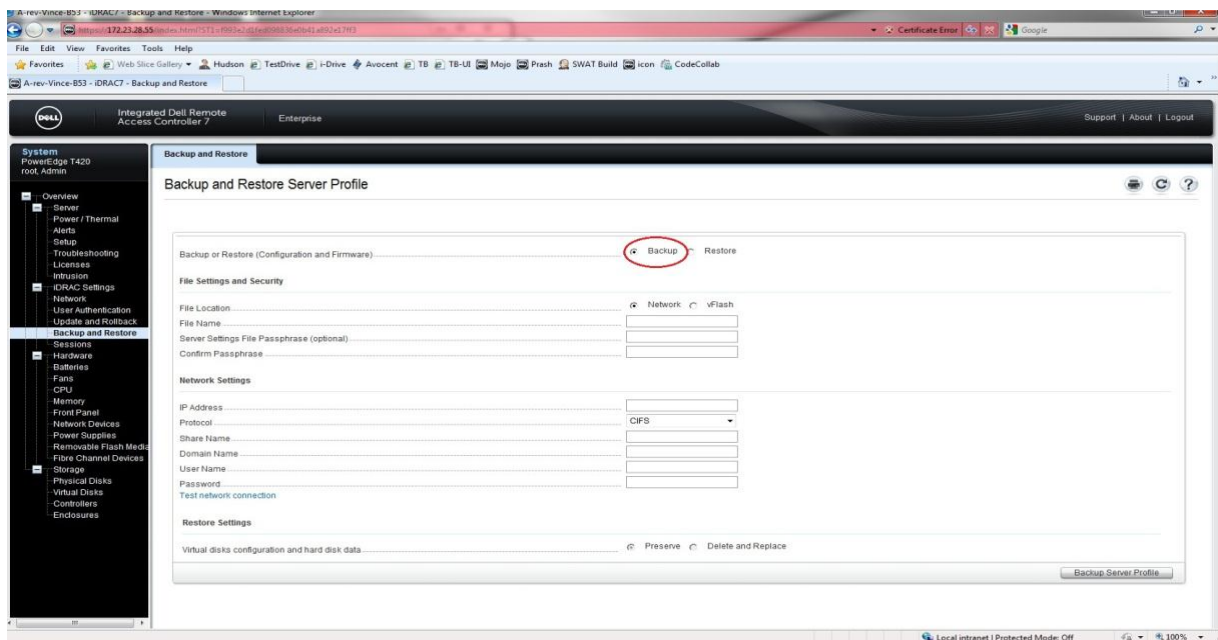
- WSMAN and RACADM Interfaces: More details on License Management can be found in the [Licensing Whitepaper](#)

## Restoring License using the BackUp and Restore Feature

### Before Motherboard Replacement:

The Backup feature allows the customer to create a copy of the server profile that consists of the component configuration and firmware, including licenses. Before replacing a motherboard, follow these steps to backup the server profile. BackUp is an iDRAC7 Licensed Feature. Make sure you have a valid Enterprise License installed.

- Backup using iDRAC GUI - Use this feature to create a single image file that can be saved to vFlash SD card or a network share(CIFS or NFS).



- Backup Feature is also available with LifeCycle Controller. Link to

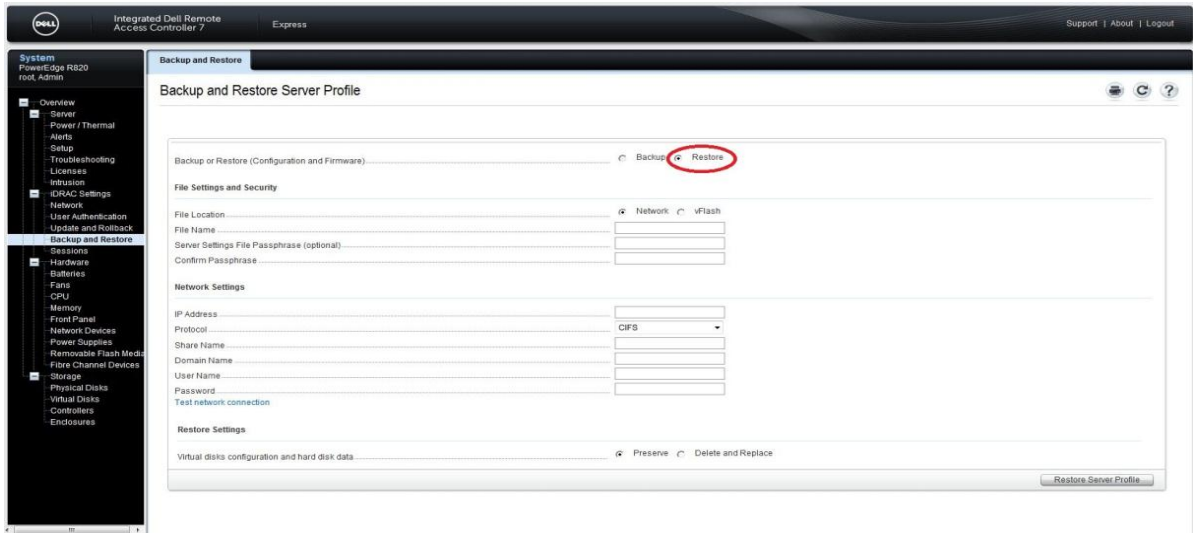
[Lifecycle Controller Backup and Restore in Dell PowerEdge 12th Generation Servers](#)

### After Motherboard Replacement:

After the motherboard is replaced, the server profile and license can be restored using the Restore Feature.

- Restore using iDRAC GUI - Go to the Backup and Restore Tab, select the Restore option to restore the configuration and firmware and licenses using the backup image file





➤ Restore Feature is also available with LifeCycle Controller. Link to

[Lifecycle Controller Backup and Restore in Dell PowerEdge 12th Generation Servers](#)

## Restoring License using License Installation Tool

If you have not backed up the server profile or exported your license before replacing your motherboard, License Installation Tool provides a mechanism to install a 30 day evaluation license. Follow these steps.

- Download image from the support [site](#).
- Create the bootable USB key or CD from the ISO.
- Boot to the USB/ CD.
- When prompted with “Do you want to install an enterprise evaluation license that is valid for 30 days?”
- Respond with Y to import the license.

The evaluation license will expire in 30 days and you must install a perpetual license.

## Conclusion or Summary

Customers are encouraged to export the licenses, so that in the event of motherboard replacement, the license can be imported easily. The License Installation Tool provides a 30 day evaluation license to avoid downtime due to a lost license.

